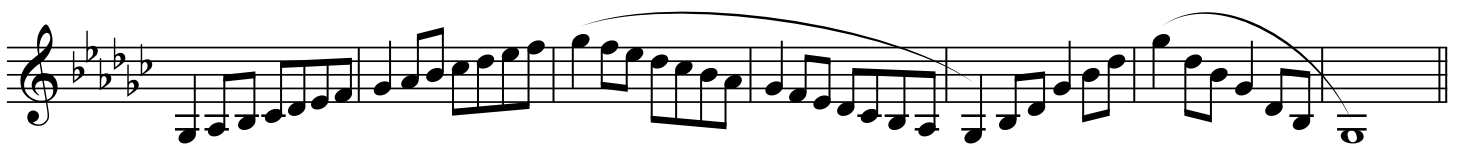
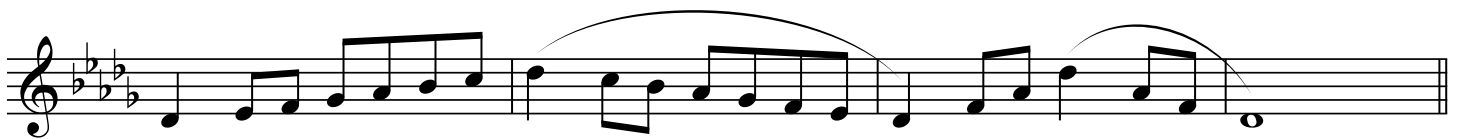
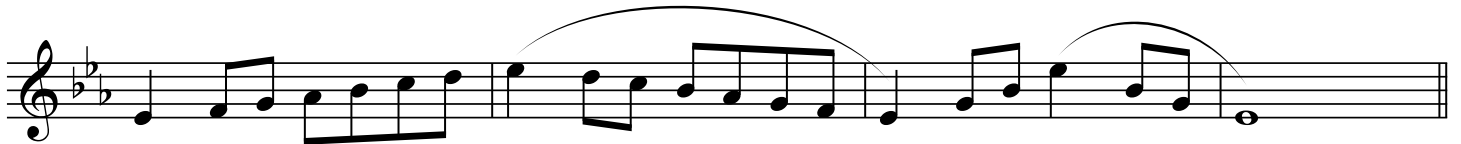
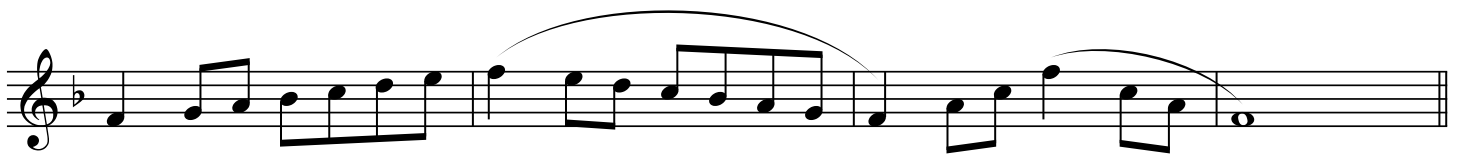
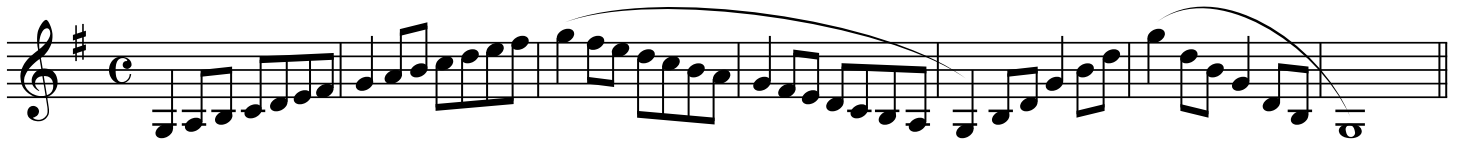


GEORGIA MUSIC EDUCATORS ASSOCIATION
ALL STATE BAND SCALES
SYMPHONIC BAND (GRADES 11-12) B \flat TRUMPET AND EUPHONIUM (TC)

$\text{♩} = 144$



The image displays four staves of musical notation for the Bb Tpt. and Euphonium (TC) part, page 2. The music is written in treble clef with a key signature of three sharps (F#, C#, G#) and a common time signature (C). The notation includes various rhythmic values such as eighth and sixteenth notes, as well as rests. Phrasing is indicated by curved lines (slurs) over groups of notes. The first staff begins with a treble clef, a key signature of three sharps, and a common time signature. The music consists of four staves, each containing a single melodic line. The notation is clear and professional, typical of a published score.